



KINGSTONS



## Lowbourne

Melksham SN12 7DY

- NO CHAIN
- Nicely decorated throughout
- Communal lounge and gardens
- Ground floor retirement home
- Large living dining space
- Town centre location

**£115,000 Leasehold**





### **Entrance Hall**

Storage cupboard, doors to living room, bedroom and bathroom.

### **Lounge/Dining Room**

17'9" x 16'2"

Electric fire and electric heater, door to kitchen and door opening out to the communal garden area with windows either side.

### **Kitchen**

7'4" x 5'9"

Fitted with a matching range of base and eye level units with worktop space over, composite sink with mixer tap, space for fridge/freezer, built-in oven, electric hob, window over looking communal garden.

### **Bedroom**

12'9" x 9'9"

Window looking out to communal garden, built in wardrobe with folding doors, electric heater.

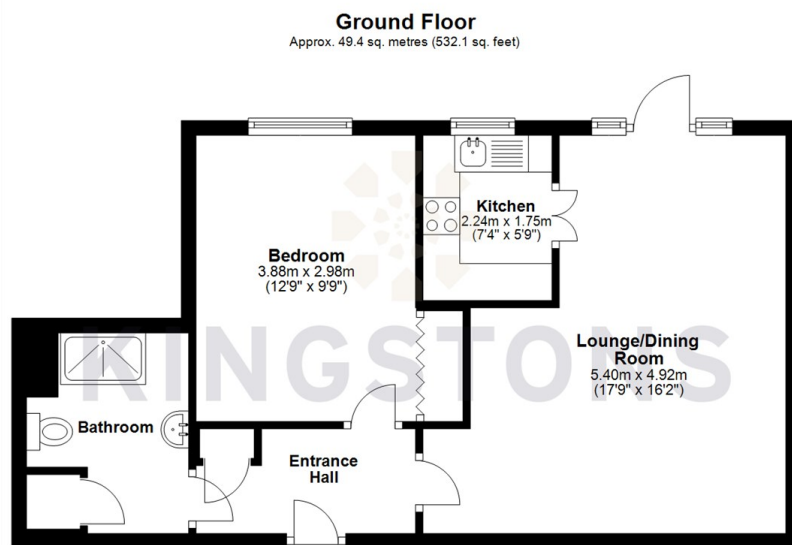


### **Bathroom**

Fitted with three piece suite comprising, wash hand basin, shower enclosure and WC, Storage cupboard with hot water tank inside.



Local Authority  
Council Tax Band **B**  
EPC Rating **B**



  
**KINGSTONS**  
Melksham Office

11 High Street, Melksham,  
Wiltshire, SN12 6JR

**Contact**

01225709115  
sales@kingstons.biz  
www.kingstons.biz

Agents Note: Whilst every care has been taken to prepare these particulars, they are for guidance purposes only. All measurements are approximate and for general guidance purposes only and whilst every care has been taken to ensure accuracy, they should not be relied upon and potential buyers/tenants are advised to recheck the measurements.